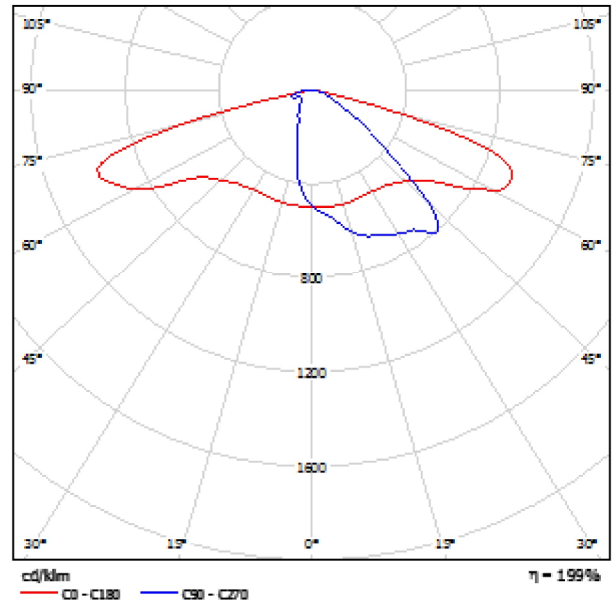


Operator
Telephone
Fax
e-Mail

RoadSpark SLIM 60W / Luminaire Data Sheet

Luminous emittance 1:

See our luminaire catalog for an image of the luminaire.



Luminaire classification according to CIE: 100
CIE flux code: 35 68 94 100 201

Due to missing symmetry properties, no UGR table can be displayed for this luminaire.

Operator
Telephone
Fax
e-Mail

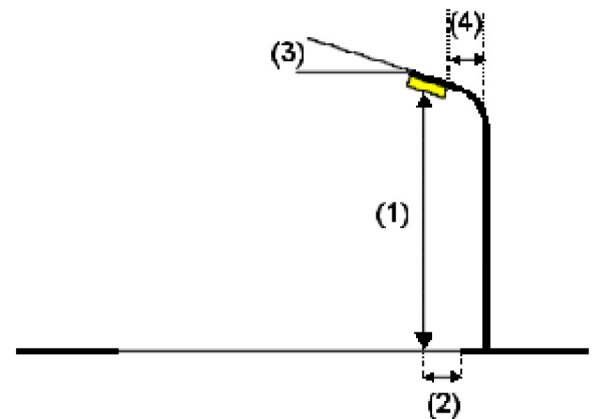
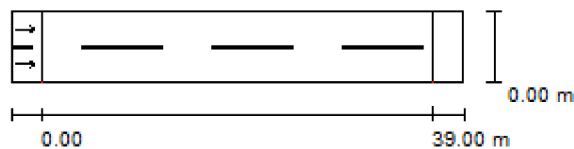
Profils 3 / Planning data

Street Profile

Roadway 1 (Width: 7.000 m, Number of lanes: 2, tarmac: R3, q0: 0.070)

Maintenance factor: 0.85

Luminaire Arrangements



Luminaire:	RoadSpark SLIM 60W
Luminous flux (Luminaire):	6072 lm
Luminous flux (Lamps):	3048 lm
Luminaire Wattage:	60.0 W
Arrangement:	Single row, bottom
Pole Distance:	39.000 m
Mounting Height (1):	8.000 m
Height:	8.000 m
Overhang (2):	0.000 m
Boom Angle (3):	10.0 °
Boom Length (4):	2.500 m

Maximum luminous intensities

at 70°:	1098 cd/klm
at 80°:	635 cd/klm
at 90°:	71 cd/klm

Any direction forming the specified angle from the downward vertical, with the luminaire installed for use.

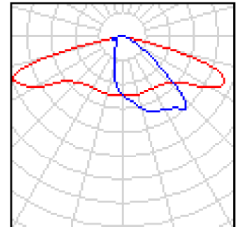
Arrangement complies with glare index class D.1.

Operator
Telephone
Fax
e-Mail

Profils 3 / Luminaire parts list

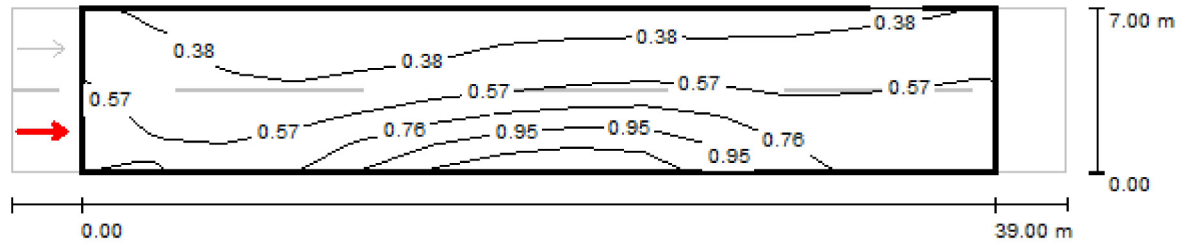
RoadSpark SLIM 60W
Article No.:
Luminous flux (Luminaire): 6072 lm
Luminous flux (Lamps): 3048 lm
Luminaire Wattage: 60.0 W
Luminaire classification according to CIE: 100
CIE flux code: 35 68 94 100 201
Fitting: 1 x Cree XP-G (Correction Factor 1.000).

See our luminaire
catalog for an image of
the luminaire.



Operator
Telephone
Fax
e-Mail

Profils 3 / Valuation Field Roadway 1 / Observer 1 / Isolines (L)



Values in Candela/m², Scale 1 : 322

Grid: 13 x 6 Points

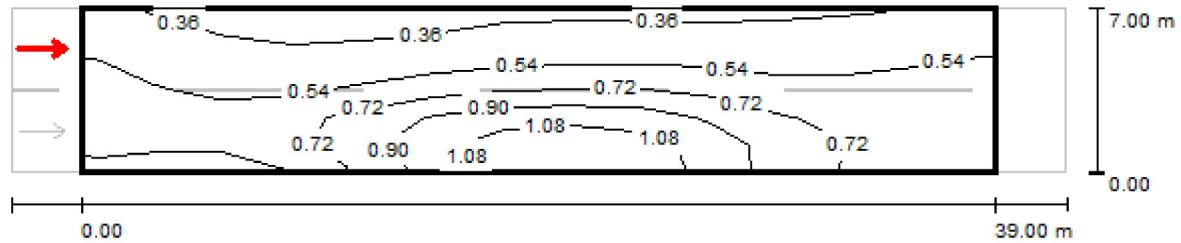
Observer Position: (-60.000 m, 1.750 m, 1.500 m)

tarmac: R3, q0: 0.070

	L_{av} [cd/m ²]	U0	UI	TI [%]
Calculated values:	0.57	0.50	0.54	15
Required values according to class ME5:	≥ 0.50	≥ 0.35	≥ 0.40	≤ 15
Fulfilled/Not fulfilled:	✓	✓	✓	✓

Operator
Telephone
Fax
e-Mail

Profils 3 / Valuation Field Roadway 1 / Observer 2 / Isolines (L)



Values in Candela/m², Scale 1 : 322

Grid: 13 x 6 Points

Observer Position: (-60.000 m, 5.250 m, 1.500 m)

tarmac: R3, q0: 0.070

	L_{av} [cd/m ²]	U0	UI	TI [%]
Calculated values:	0.62	0.50	0.71	10
Required values according to class ME5:	≥ 0.50	≥ 0.35	≥ 0.40	≤ 15
Fulfilled/Not fulfilled:	✓	✓	✓	✓