

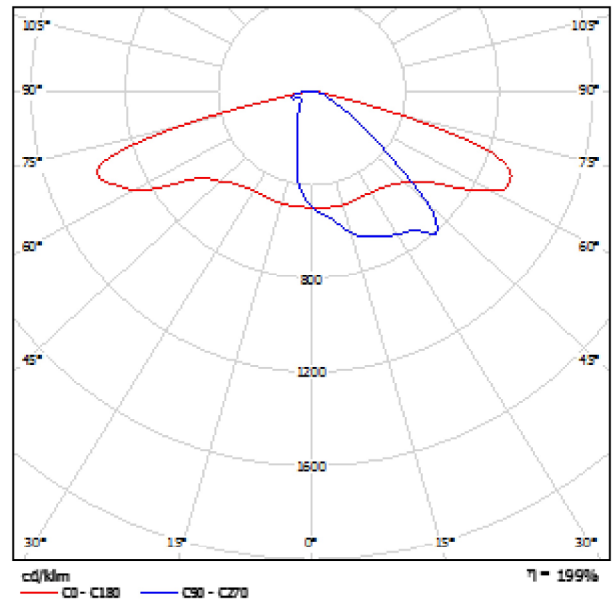


Operator
Telephone
Fax
e-Mail

RoadSpark SLIM 60W / Luminaire Data Sheet

Luminous emittance 1:

See our luminaire catalog for an image of the luminaire.



Luminaire classification according to CIE: 100
CIE flux code: 35 68 94 100 201

Due to missing symmetry properties, no UGR table can be displayed for this luminaire.



Operator
Telephone
Fax
e-Mail

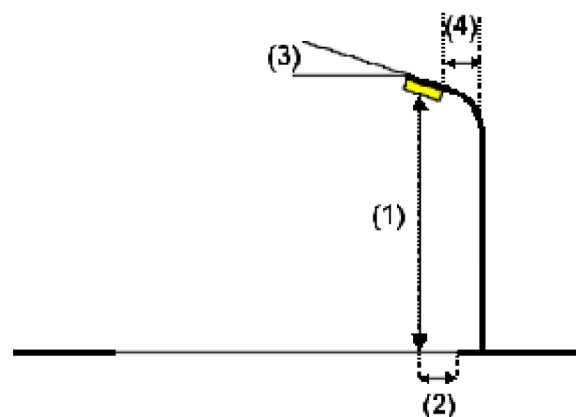
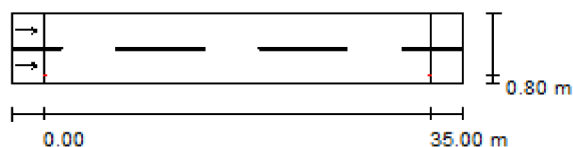
Zemgales iela un loks / Planning data

Street Profile

Roadway 1 (Width: 6.500 m, Number of lanes: 2, tarmac: R3, q0: 0.070)

Maintenance factor: 0.85

Luminaire Arrangements



Luminaire:	RoadSpark SLIM 60W
Luminous flux (Luminaire):	6072 lm
Luminous flux (Lamps):	3048 lm
Luminaire Wattage:	60.0 W
Arrangement:	Single row, bottom
Pole Distance:	35.000 m
Mounting Height (1):	7.500 m
Height:	7.500 m
Overhang (2):	0.800 m
Boom Angle (3):	0.0 °
Boom Length (4):	2.000 m

Maximum luminous intensities

at 70°:	1116 cd/klm
at 80°:	234 cd/klm
at 90°:	29 cd/klm

Any direction forming the specified angle from the downward vertical, with the luminaire installed for use.

No luminous intensities above 90°.

Arrangement complies with glare index class D.3.

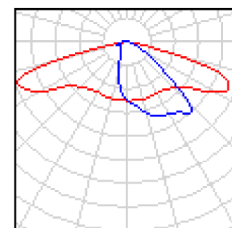


Operator
Telephone
Fax
e-Mail

Zemgales iela un loks / Luminaire parts list

RoadSpark SLIM 60W
Article No.:
Luminous flux (Luminaire): 6072 lm
Luminous flux (Lamps): 3048 lm
Luminaire Wattage: 60.0 W
Luminaire classification according to CIE: 100
CIE flux code: 35 68 94 100 201
Fitting: 1 x Cree XP-G (Correction Factor 1.000).

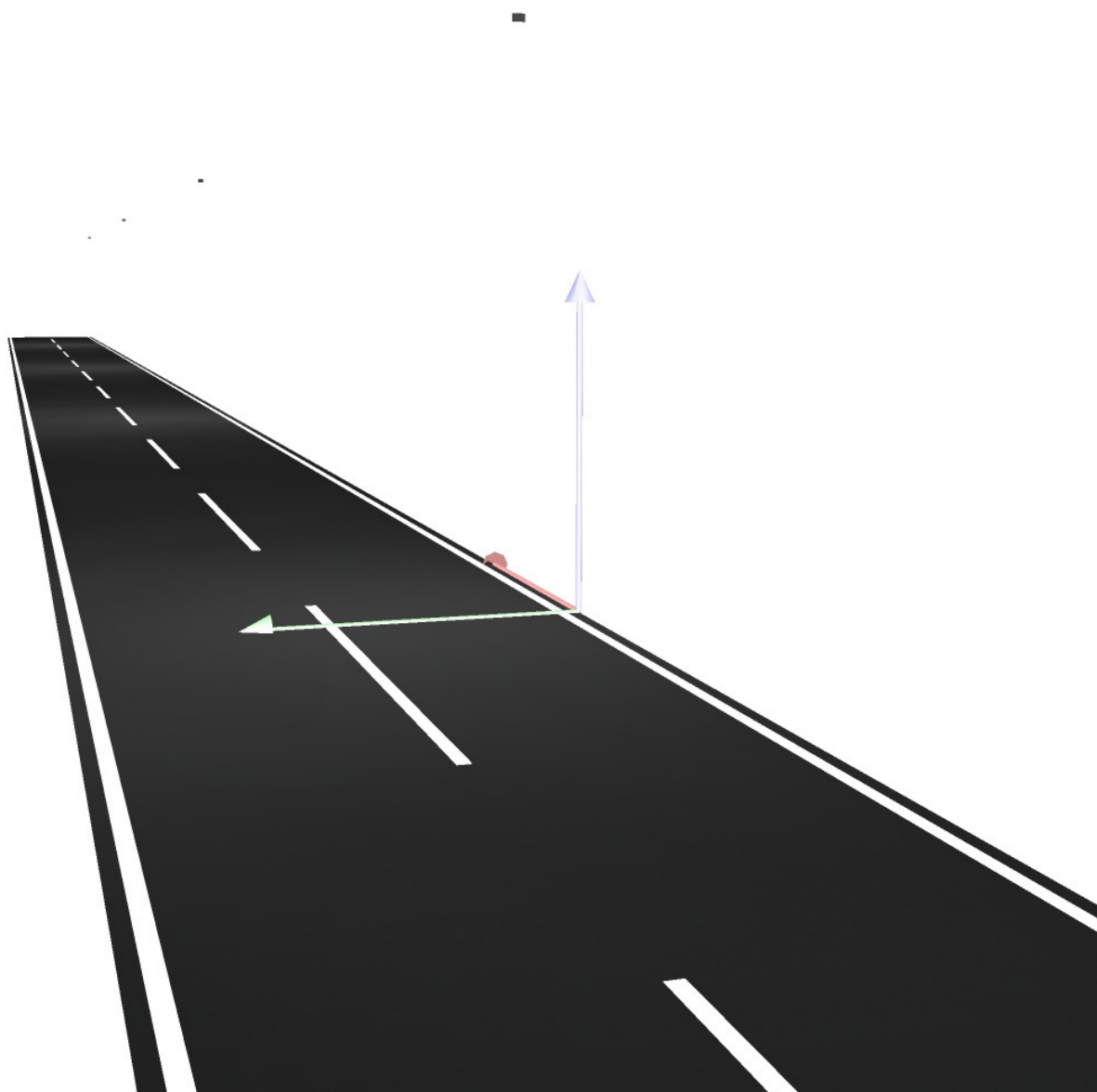
See our luminaire
catalog for an image of
the luminaire.





Operator
Telephone
Fax
e-Mail

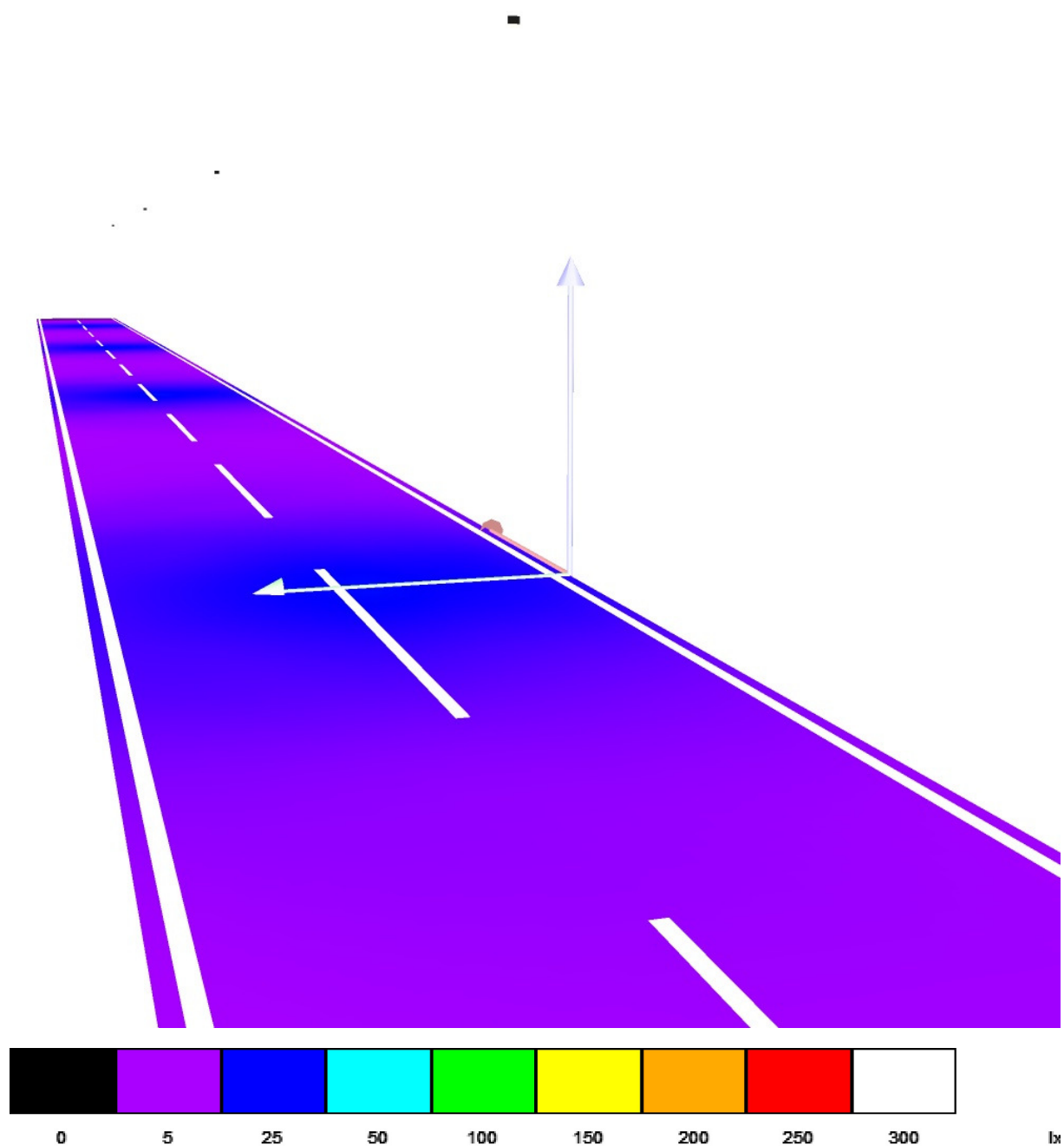
Zemgales iela un loks / 3D Rendering





Operator
Telephone
Fax
e-Mail

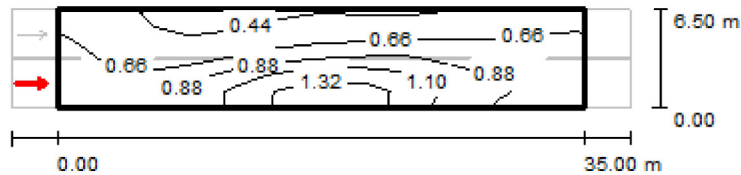
Zemgales iela un loks / False Colour Rendering





Operator
Telephone
Fax
e-Mail

Zemgales iela un loks / Valuation Field Roadway 1 / Observer 1 / Isolines (L)



Values in Candela/m², Scale 1 : 500

Grid: 12 x 6 Points

Observer Position: (-60.000 m, 1.625 m, 1.500 m)

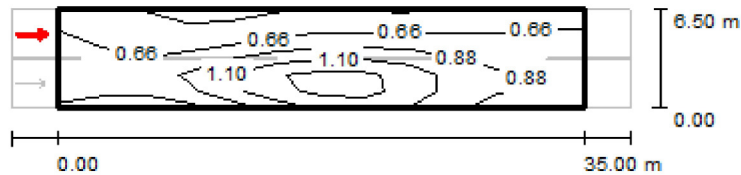
tarmac: R3, q0: 0.070

	L_{av} [cd/m²]	U0	UI	TI [%]
Calculated values:	0.78	0.47	0.53	14
Required values according to class ME4b:	≥ 0.75	≥ 0.40	≥ 0.50	≤ 15
Fulfilled/Not fulfilled:	✓	✓	✓	✓



Operator
Telephone
Fax
e-Mail

Zemgales iela un loks / Valuation Field Roadway 1 / Observer 2 / Isolines (L)



Values in Candela/m², Scale 1 : 500

Grid: 12 x 6 Points

Observer Position: (-60.000 m, 4.875 m, 1.500 m)

tarmac: R3, q0: 0.070

	L_{av} [cd/m ²]	U0	UI	TI [%]
Calculated values:	0.82	0.50	0.66	11
Required values according to class ME4b:	≥ 0.75	≥ 0.40	≥ 0.50	≤ 15
Fulfilled/Not fulfilled:	✓	✓	✓	✓