



Olaine region
active · industrial · green

SUSTAINABLE DEVELOPMENT



OLAINE CITY APPROACH

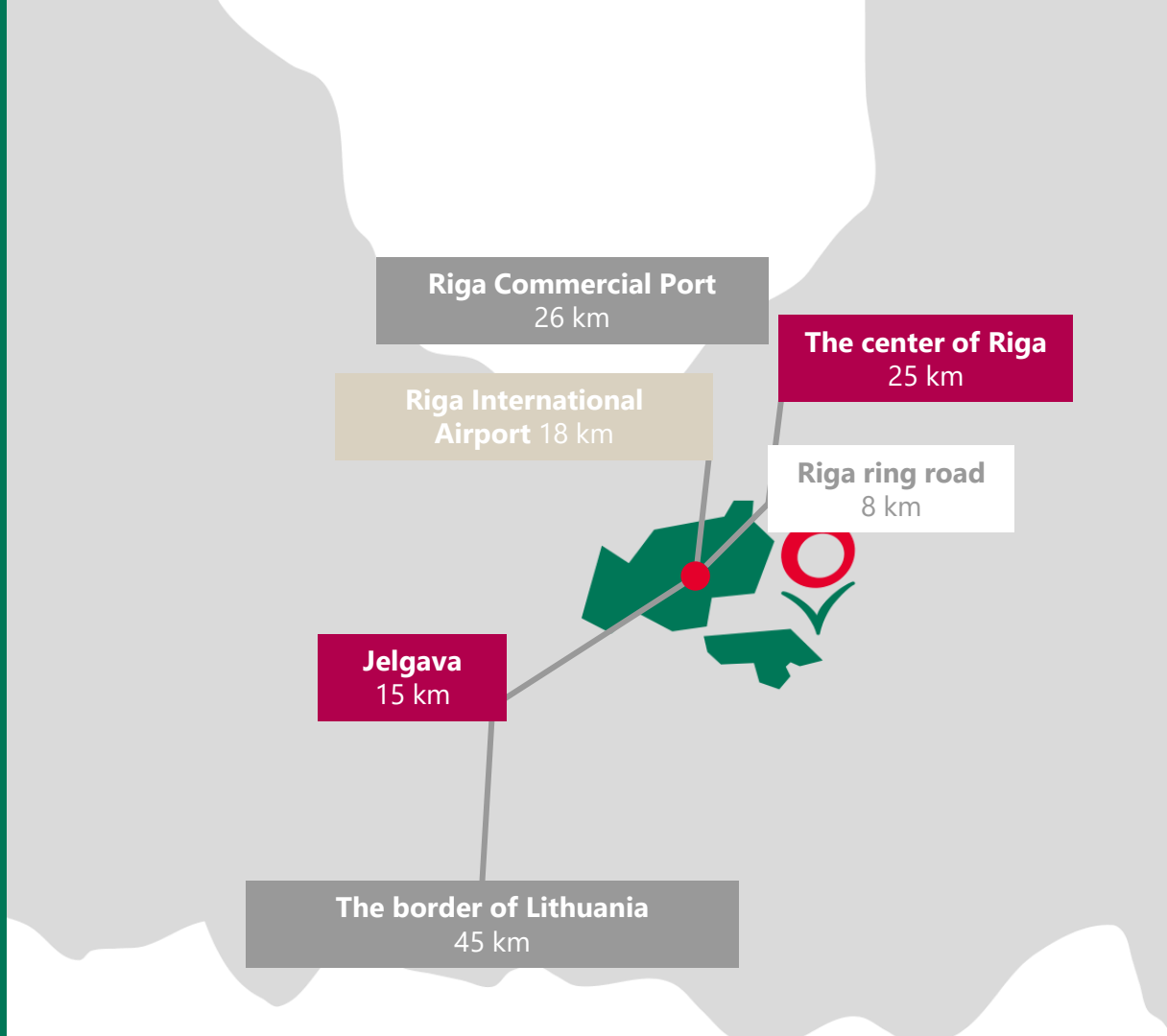
OLAINE-08.2023.



Location

Distances to the objects of significant economic importance

The region is crossed by the railway line "Riga - Jelgava" and national intercity highway A8





Main Data

21 587

Population of the
region (Jan 2023)

10 584

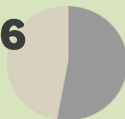
Population of the
city of Olaine (Jan 2023)

3,6%

Unemployment rate
in the region (June
2023)

10236

male



11351

female

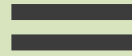
1967

The city of Olaine established





Olaine region



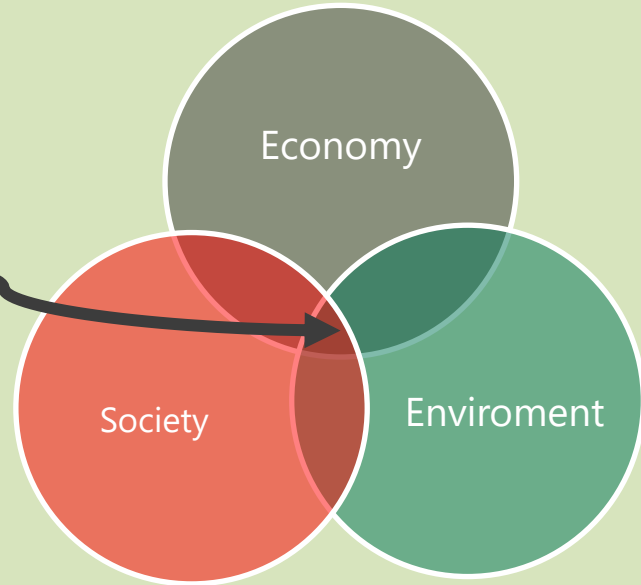
Active

Industrial

Green

**SUSTAINABLE
DEVELOPMENT
IS HERE**

Where is BALANCE?



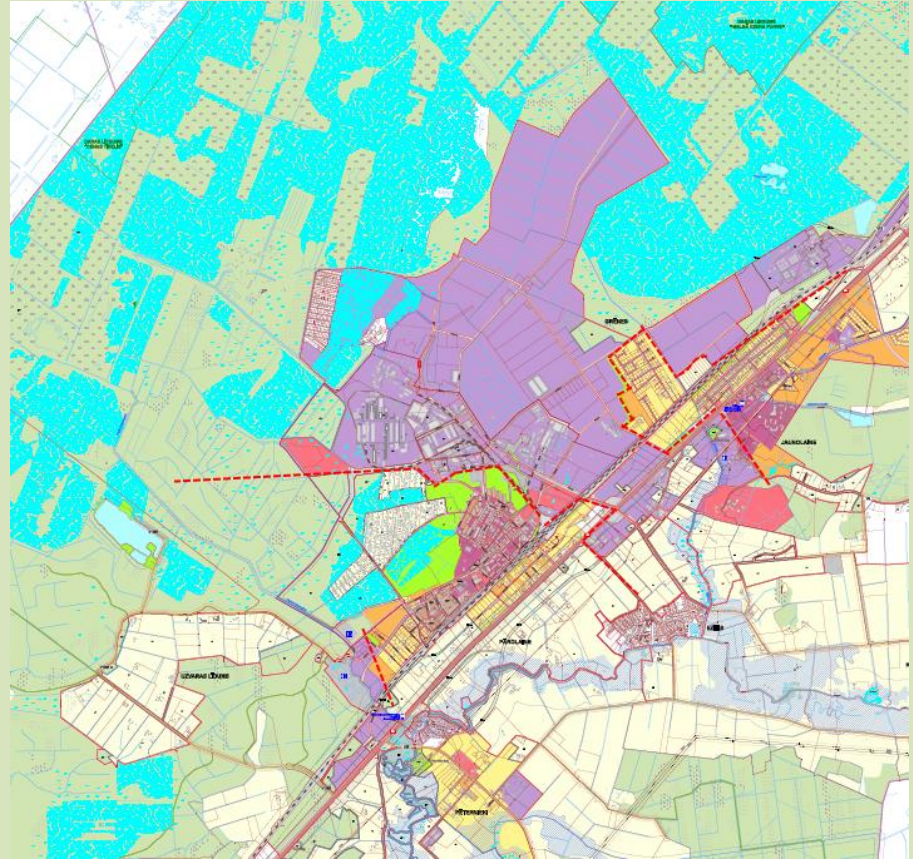
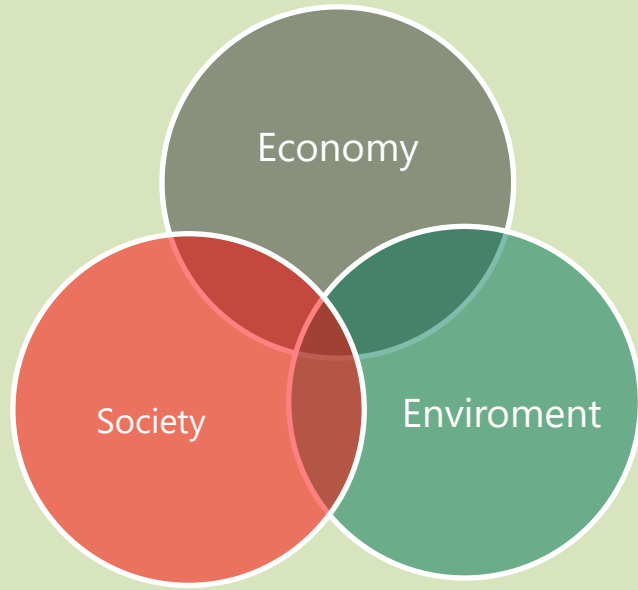
SUSTAINABLE DEVELOPMENT PLAN – LONG TERM PLAN



Olaine region sustainable development plan 2013-2030 goals:

- Comfortable place to live;
- Well developed public space;
- Social infrastructure. Effective and future oriented management, for inhabitants all life long learning system, social help when needed;
- Diverse cultural life;
- Comfortable and rational transportation system (roads, streets, pathways, bicycle ways, public transport) and comunal infrastructure – electricity, water system, waste management;
- Well maintained and attractive public space;
- Diverse employment opportunity;
- Economic/business/industrial developmet.

TERRITORY ZONING AND BUILDING RULES



Space for society, environment, economy.
BALANCE=SUSTAINABILITY.
ZONING MUST NOT CONFLICT.

Countries of Cooperation



Sweden

Karlskoga and Ödeshög



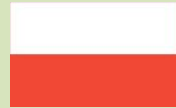
Finland

Riihimäki



Lithuania

Anykščiai



Poland

Nowa Sarzyna and Radomsko



Ukraine

Mena

Education

Schools + Kindergartens

2 secondary schools in the region

4 municipal
pre-school education establishments

Higher education

Riga Technical University

Technology
College of Olaine



active

Olaine region





active

Olaine region





active

Olaine region



active

Olaine region



Leisure and Sports

active

Olaine region





Green



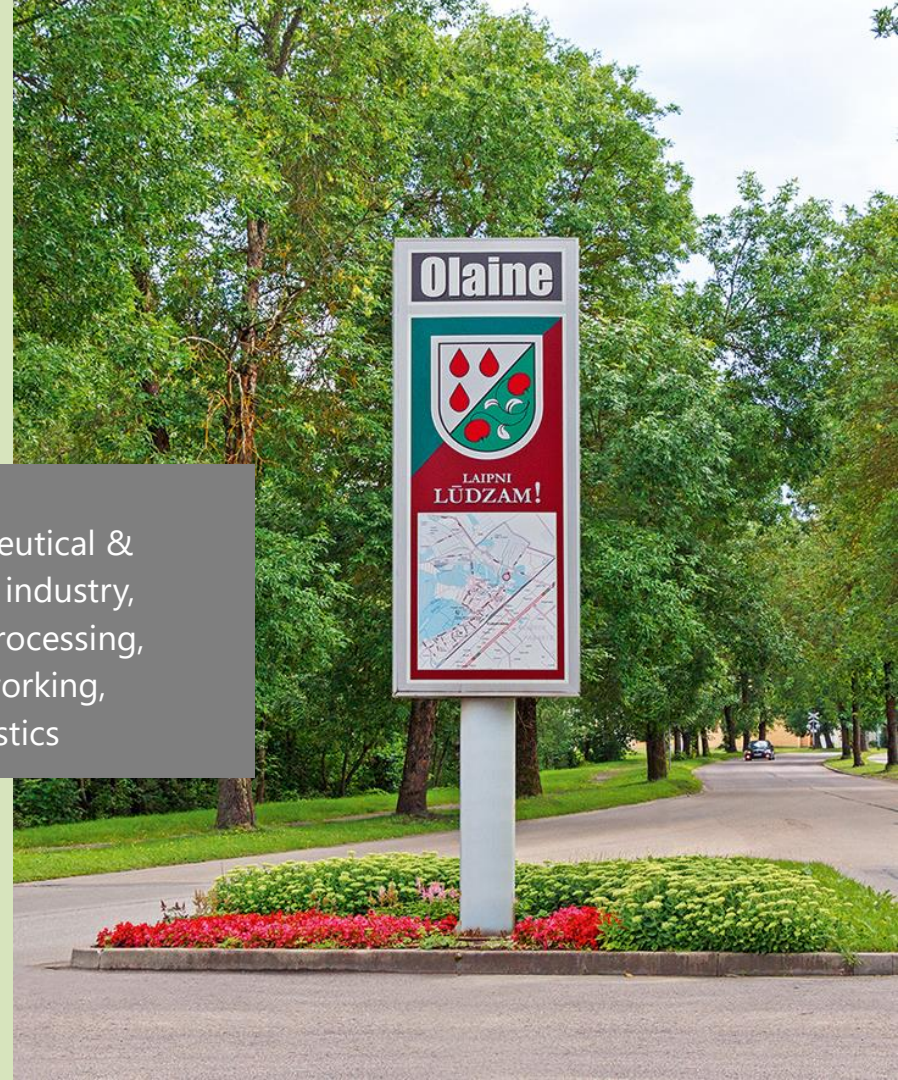
Olaine is well-developed industrial region

Olaine is the place that has successfully attracted logistics centers and warehouse industry, manufacturing companies, especially, in the processing industry



Olaine region
active · industrial · green

pharmaceutical &
chemical industry,
plastics processing,
metalworking,
logistics



Goals for 2030

Pro-business environment for manufacturing and other enterprises:

- Development of the Olaine industrial zone;
- Municipal support for the businesses and investors;
- Entrepreneurial spirit and skills

industrial
Olaine region

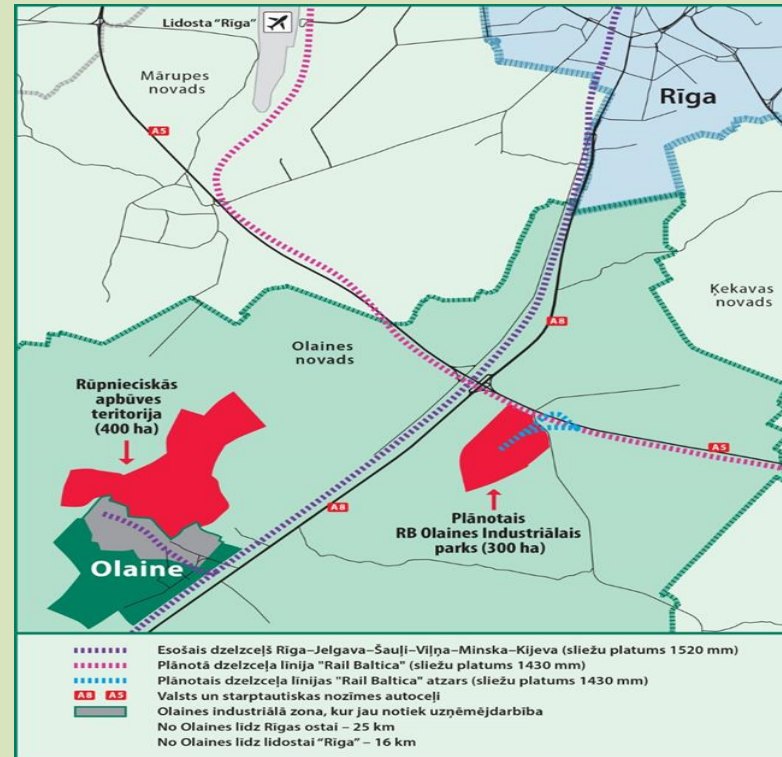


Industrial zones under development in Olaine municipality

industrial

Olaine region

Industrial development territories according to Local planning regulations.



Examples

industrial
Olaine region



Examples

industrial

Olaine region

Olaine Logistics Park



Olaine Logistics Parks (OLP) is a strategically located A-Class 37,000 sq. m warehouse property featuring contemporary technical solutions and a full-spectrum temperature control.

Excellent geographic location – mid-point of the Baltic region – ensures convenient distribution across Latvia and the Baltic States.

Top-tier companies – Maxima, McDonald's and LV Logic are the key tenants in Olaine Logistics Parks.

Additional 9,34 ha land plot with permission to build up to 50,000 sq.m ensures expansion possibilities.

Examples

industrial

Olaine region

Nordic Industrial Park



Examples

industrial

Olaine region

Nordic Industrial Park



Nordic Industrial Park is one of the oldest industrial parks in Latvia.

It was founded in 2000 in the territory of a former plastics processing plant.

Today it is the second biggest industrial park managed by NP Properties, which is a subsidiary of Nordic Partners and the biggest developer of industrial parks in Latvia.

There are 16 buildings suitable for manufacturing and warehouse industry as well as office spaces.

All buildings are renovated, refurbished and adapted to various kinds of business activities. Buildings are easily accessible by the adjacent roads and large size gates.

Tenants by countries:

65% local , 35% foreign enterprises from Japan, Iceland, Sweden.

Industries:

Pharmaceutical industry, metalworks, fish-processing, manufacturing, recycling

Top Companies

industrial

Olaine region

Olainfarm



Top Companies

industrial

Olaine region

Olainfarm



Olainfarm is the leading manufacturer in the chemical and pharmaceutical sector of the Baltic States with more than 50 years of experience.

Portfolio contains over 60 FDFs, 25 APIs and more than 20 Intermediates.

The key areas of specialization in FDFs include neurology, cardiology, infectology and allergology. Olainfarm has a long-standing technological and know-how advantage in adamantane, quinuclidine and nitrofurane chemistry.

Olainfarm exports to more than 60 countries worldwide, export share is near 85%.

Top Companies

industrial

Olaine region



Olainfarm
Lyngson

LYNGSON



Top Companies

industrial

Olaine region

Olainfarm
Lyngson

LYNGSON

Lyngson is the only manufacturer of heating radiators in the Baltics.

The company started the business in 2007 when the Norwegian parent company Lyngson AS opened the manufacturing plant in Olaine.

The products of Lyngson are being sold to the parent company and its sister company in Sweden - Epecon AB.

The export share is 97%.

The installed manufacturing capacity is 150 000 radiator units per year or approximately 3000 units per week. Currently, about 2500 units are being manufactured per week.

110 employees currently work for the company.

Top Companies

industrial

Olaine region

Latvijas
aptiēka
Tavai veselībai

Olainfarm
Lyngson
Latvijas Aptiēka



Top Companies

industrial

Olaine region

Olainfarm
Lyngson
Latvijas Aptieka

The logo for Latvijas aptieka features the word "Latvijas" in a smaller blue font above "aptieka" in a larger, bold blue font. A small green plus sign is positioned between the two words. Below the main text, the tagline "Tavai veselībai" is written in a smaller, lighter blue font.

Latvijas
aptieka
Tavai veselībai

Latvijas aptieka is a brand known throughout Latvia. Drugstores with our country name on the blue-green signboards are located everywhere in Latvia – their numbers are already coming 70!

Pharmaceutical centres are modern, with a diverse assortment, affordable shopping opportunities for customers and discount policy.

Pharmacies that are always in good faith with their customers are educational and helpful.

Top Companies

industrial

Olaine region

Olainfarm
Lyngson
Latvijas Aptieka
Cross Chem



Top Companies

industrial

Olaine region

Olainfarm
Lyngson
Latvijas Aptieka
CrossChem



SIA CrossChem is a 100% Latvian-owned company that produces sustainable and environmentally friendly products:

- Neutralizing agents for nitrogen oxide (NOx) emissions from diesel engines - AdBlue, AUS40, DEF;
- Car chemicals - antifreezes, windshield washer fluids, coolants, etc.
- Liquid nitrogen fertilizers - KAS, AMS, KS;

SIA CrossChem is part of the CrossChem International group, which produces and supplies more than 1 billion litres of products to its customers every year. Headquartered and based in Olaine, the company is part of a global chain of automotive chemical manufacturers and distributors that combines global expertise and provides certain competitive advantages to every company in the group.

Foreign direct investment

industrial

Olaine region

By the end of 2020

85 324 566,44 EUR

TOP countries



Exports leadership

industrial

Olaine region

Luminor



OLAINES
NOVADS



MĀRUPES
NOVADS



LIEPĀJA

Eksporta čempions 2021

Support for Businesses

industrial

Olaine region

Tax benefits and other deductions, support for entrepreneurs and investors

Support for businesses:

Grant Programs

Real estate tax benefits

Consultations

Marketing

Coworking space

Cooperation with:

LIAA Business Incubator in Jurmala

Turība Business HUB

Zemgale Region Human Resource and Competences Development Centre

NGO «Pierīgas Partnerība»

LTRK, LDDK

Contacts

Olaine region municipality

Phone: +371 67964333

e-mail: pasts@olaine.lv

www.olaine.lv

Olaine Municipality Business Support Center

Phone: +371 29417886

e-mail: onuac@olaine.lv



Olaine region
active • industrial • green

